

Topics in Anthropology: Climate Change & Human Health

ANTH 4090.005 / ESCI 4000.005 / INTL 3000.005

Time: MW 12:30 pm – 1:45 pm

Location: Fretwell 419



Instructor: Dr. Lydia E. O. Light

Office: Hickory 45B

Email: llight1@uncc.edu

Office Hours: TR 11:00 am - 1:00 pm and by appointment

IMPORTANT INFORMATION ABOUT MY OFFICE HOURS: My office is located on the 4th floor of Hickory building while Barnard is under renovation. Unfortunately, this level is only accessible by stairs. If you have a mobility issue, or develop a medical condition that affects your mobility, please indicate this when requesting an appointment, and I will determine an alternate location for our meeting. If you have questions or concerns about this, please contact me directly.

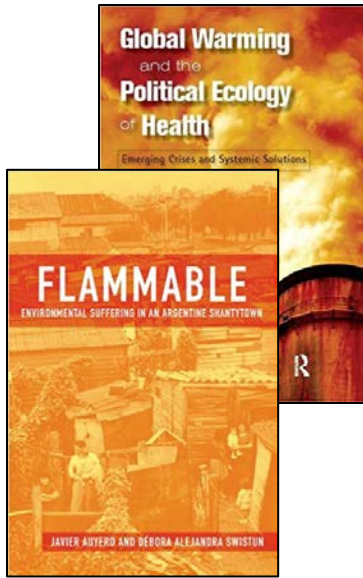
COURSE DESCRIPTION:

This course will examine the effects of global climate change on human health from an anthropological perspective. We will begin with an overview of climate science, including the processes involved in global weather patterns and the various factors contributing to current climate change. We will then explore ways in which global climate change is impacting human health at local and global scales, including access to water, changing settlement patterns, nutrition, environmental pollutants, disease transfer, human displacement, interpersonal conflict, and global sociopolitical issues. Throughout the course, we will address fundamental anthropological questions related to cultural practices, past societies, and the interaction between power, resistance, and agency.



***This course affirms people of all gender expressions and gender identities. If you prefer to be called a different name than what is indicated on the class roster, please let me know. Feel free to correct me on your preferred gender pronoun. If you have any questions or concerns, please do not hesitate to contact me.

REQUIRED MATERIALS:



The Teacher-Friendly Guide to Climate Change
2017

By Ingrid H.H. Zaebell, Don Duggan-Haas, and Robert M. Moss
ISBN-13: 978-0877105190

(This entire e-text is provided on Canvas for FREE)

Global Warming and the Political Ecology of Health
2008

By Hans Baer and Merrill Singer
ISBN-13: 978-1598743548

(can be rented/purchased as **either hard copy or e-book**)

Flammable: Environmental Suffering in an Argentine Shantytown
2009

By Javier Auyero and Debora Alejandra Swistun
ISBN-13: 978-0195372939

(can be rented/purchased as **either hard copy or e-book**)

COURSE UNITS:

Unit One: This unit will provide students with an overview of current climate science. We will cover general climate processes, documented changes in climate over time, the explanations that have been proposed by scientists for why the climate is currently changing in ways that differ from changes in the past, and why that matters for both social and political reasons.

Unit Two: In this unit, students will examine the effects of global climate change on human health and wellbeing at both local and global scales. We will learn about how past societies coped (or did not) with climate change and how human health continues to be affected by climate change today. Specific topics will include: access to water, changing settlement patterns, nutrition, environmental pollutants, disease transfer, human displacement, interpersonal conflict, and global sociopolitical issues.

COURSE REQUIREMENTS:

All students are expected to **take responsibility for their learning** in this course. This includes attending lectures, completing assigned readings, participating in small group and class discussions, turning in all take-home assignment on time and keeping up to date on all information presented via Canvas. All students are encouraged to visit me during my office hours for assistance. Unanticipated factors such as time constraints and accessibility of reading material may influence the planned topics and schedule. All changes in course content and schedule will be announced as far in advance as is feasible.

EXAM: There will be **one exam** at the conclusion of the first unit worth 10% of your final grade. This exam will cover the existing scientific data related to global climate change.

PAPERS: **Two 5-8 page research papers** will be assigned during the second unit. These papers will cover anthropological topics of the student's choice related to the course. Papers need to be

formatted correctly with in-text citations following any standard citation style. Paper topics and preliminary reference lists must be submitted on Canvas for approval by the instructor. Each paper will be worth 20% of your final grade. Details will be provided on Canvas.

READING SUMMARIES: Frequent, lengthy readings will be required for this course. Brief reading summaries need to be completed and uploaded to Canvas prior to class on the date the reading is listed on the syllabus. I will drop three reading summary grades. Together, reading summaries will be worth a total of 15% of your final grade.

VIDEO RESPONSES: Throughout the semester, I will be showing videos that help clarify or expand on topics covered in class. The videos do NOT serve to fill empty time, but should instead be considered valuable learning material. Therefore, you will be asked to complete video response papers worth a total of 15% towards your final grade. Video response papers are due **prior to the beginning of the next class**. Instructions for completing the video response papers will be posted on Canvas. I will drop your lowest video response grade.

PARTICIPATION: This class will be presented in a seminar style, requiring all students to participate in class discussions. Contributions to class discussion will be measured during each class period by frequency, relevance, and depth. During class, please monitor your contributions so that everyone has the opportunity to participate. Participation will be graded and will count for 10% of your final grade.

ATTENDANCE: Attendance will be required and will count for 10% of your final grade. You are allowed three absences without penalty during the semester. Therefore, if you have to miss class for a university-approved reason, please contact me beforehand or within 24 hours of missing class (or within 24 hours of being capable of contacting me).

GRADING:

Assessment	Approximate percent of final grade
Exam	10%
First Paper	20%
Second Paper	20%
Video Responses	15%
Reading Summaries	15%
Participation	10%
Attendance	10%
Total	100%

Final course grades will be assigned as follows:

A	90-100%
B	80-89%
C	70-79%
D	60-69%
F	<60%

There will be **NO EXTRA CREDIT OPPORTUNITIES**, as this is an advanced course.

CLASSROOM BEHAVIOR

My classroom is a place where open-minded, independent thinking is encouraged. To facilitate this environment, all students are expected to act with respect and maturity towards their fellow students, the instructor, and any visiting speakers.

I hold the following expectations for my students:

- 1) All cell phones (smart or dumb) and other personal electronics must be **put away before the start of class** and kept out of sight. If you are using a laptop, I ask that you use it **only for taking notes or completing in-class activities**. If you have extenuating circumstances, please contact me.
- 2) To reduce in-class distractions, please **remain seated during class**. If you know you need to leave prior to the end of class, please speak to me before class begins.
- 3) Please save your personal discussions for after class and avoid interrupting classmates.
- 4) Arrive **on-time** for class and refrain from packing up your belongings before the lecture is finished. While it is reasonable to be late occasionally, habitual tardiness is not acceptable. If you have extenuating circumstances, please contact me.
- 5) Some of the material covered in class may be perceived as controversial. Please remain respectful of your classmates (and instructor) during discussions of such nature. Each of us may have strongly differing opinions on the various topics of class discussions. The orderly questioning of the ideas of others, including mine, is similarly welcome. However, I will exercise my responsibility to manage the discussions so that ideas and argument can proceed in an orderly fashion. You should expect that if your conduct during class discussions seriously disrupts the atmosphere of mutual respect I expect in this class, you will not be permitted to participate further and may subsequently lose opportunities for course credit.

This syllabus contains the policies and expectations I have established for the Topics in Anthropology: Global Climate Change and Human Health course. Please read the entire syllabus carefully before continuing in this course. These policies and expectations are intended to create a productive learning atmosphere for all students. Unless you are prepared to abide by these policies and expectations, you risk losing the opportunity to participate further in the course.

SCHOLASTIC DISHONESTY

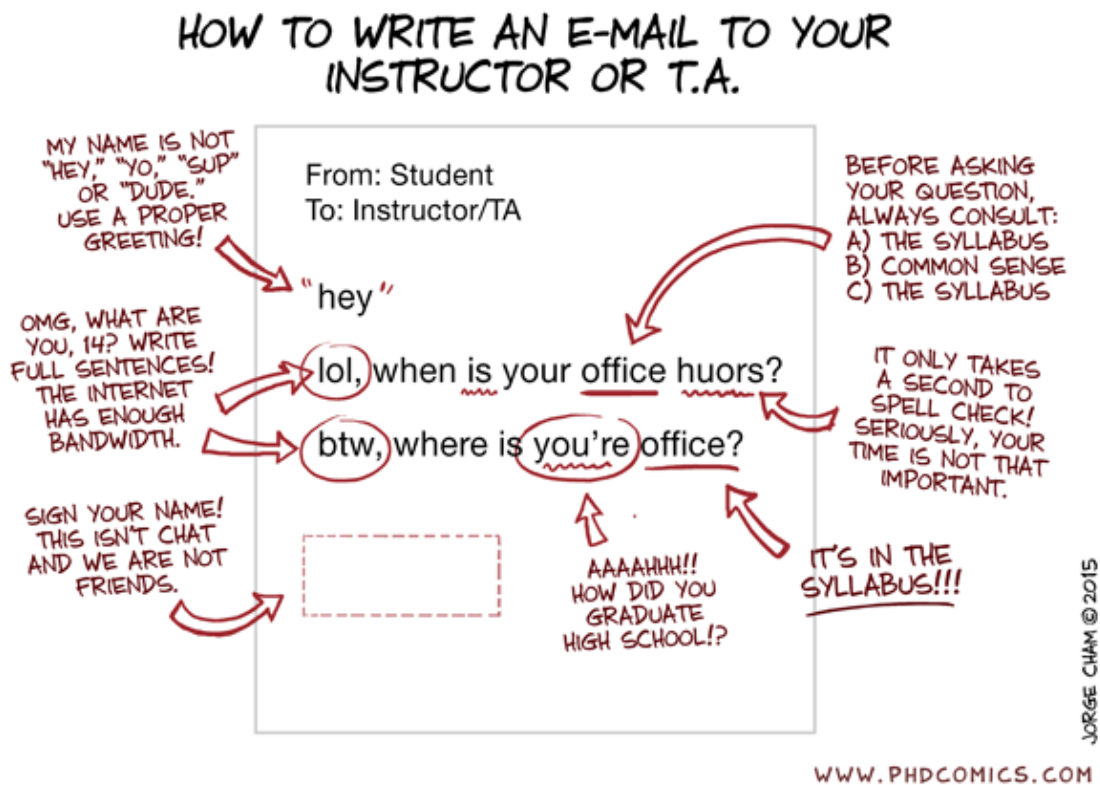
I do not tolerate any form of academic dishonesty in my class. I will not tolerate any attempts to manipulate grading opportunities or misappropriate credit for work done and will penalize any student violating the university policies on scholastic dishonesty. I reserve the right to ask students to produce identification at examinations and may require students to demonstrate that graded assignments completed outside of class are their own work. All students are required to read and abide by the Code of Student Academic Integrity. Violations of the Code of Student Academic Integrity, including plagiarism, will result in disciplinary action as provided in the Code. Definitions and examples of plagiarism are set forth in the Code. The Code is available from the Dean of Students Office or [online](#).

ACADEMIC ASSISTANCE & ACCOMMODATIONS

I encourage all of my students to seek out additional assistance if they are concerned about their academic performance (and even if they are not). I am always available to meet with students either during my office hours or by appointment. In addition, the university provides a number of services designed to help students excel academically. Students in this course seeking accommodations to disabilities must first consult with the Office of Disability Services and follow the instructions of that office for obtaining accommodations.

COMMUNICATION POLICY

I try to be available to students as much as possible. In addition to being available during office hours, feel free to email me at light1@uncc.edu with questions. I will respond to emails within 24 hours, but usually much sooner. However, if there is no question in the email that needs to be answered or the question is explicitly stated here in the syllabus, I will not respond to the email. Also, if the email is not written in a professional manner, I will request ONCE that you follow proper formatting, after which I will stop communicating with you via email.



TITLE IX REPORTING POLICY

UNC Charlotte is committed to providing an environment free of all forms of discrimination and sexual harassment, including sexual assault, domestic violence, dating violence, and stalking. If you (or someone you know) has experienced or experiences any of these incidents, know that

you are not alone. UNC Charlotte has staff members trained to support you in navigating campus life, accessing health and counseling services, providing academic and housing accommodations, helping with legal protective orders, and more.

Please be aware that many UNC Charlotte employees, including all faculty members, are considered [Responsible Employees](#) who are required to relay any information or reports of sexual misconduct they receive to the Title IX Coordinator. **This means that if you tell me about a situation involving sexual harassment, sexual assault, dating violence, domestic violence, or stalking, I must report the information to the Title IX Coordinator.** Although I have to report the situation, you will still have options about how your case will be handled, including whether or not you wish to pursue a formal complaint. Our goal is to make sure you are aware of the range of options available to you and have access to the resources you need.

If you wish to speak to someone confidentially, you can contact any of the following on-campus resources, who are not required to report the incident to the Title IX Coordinator: (1) University Counseling Center (counselingcenter.uncc.edu, 7-0311); (2) Student Health Center (studenthealth.uncc.edu, 7-7400); or (3) Center for Wellness Promotion (wellness.uncc.edu, 7-7407). Additional information about your options is also available at titleix.uncc.edu under the “Students” tab.